



Specac

Product Reference Guide 2009

www.specac.com



Contents

	IR Sampling Accessories	3
	Reflectance	4
	Transmission	12
	Sample Preparation	31
	Sampling kits	41
	IR Polarizers, wire grids	45

IR Sampling Accessories



Reflectance

Golden Gate™



Golden Gate™ Single Reflection Diamond ATR Series MkII

10500

The Golden Gate is the world's most versatile Infrared sampling system. It analyzes all sample types from hard solids to corrosive liquids and is fast, extremely sensitive and robust.



Golden Gate™ Diamond ATR Top-Plate Mk II

10563

Includes: sapphire and pellet anvils, as well as volatiles cover



Golden Gate™ Germanium ATR Top-plate MkII

10566

Includes: large stainless steel anvil and volatiles cover

300°C



300°C High Temperature Golden Gate™ ATR Mk II

10640

High temperature 300°C - includes: sapphire and pellet anvils, as well as volatiles cover



Heatable Golden Gate™ ATR Mk II

10542

Heatable to 200°C - includes: sapphire and pellet anvils, as well as volatiles cover



Golden Gate™ Low Temperature Golden Gate

10592

The Golden Gate™ low temperature diamond ATR system is the first ATR accessory to provide high performance ATR measurements down to near liquid nitrogen temperature.



Golden Gate™ Supercritical Fluids Analyzer

10585

A high temperature, high pressure, low volume FTIR accessory developed for the study of supercritical fluids and polymers.



Golden Gate™ Reaction Cell Diamond Top-plate

10525

Shown with optional stirring mechanism (10513). Heatable to 200°C and pressure up to 3000psi

Golden Gate™

- 10500 Golden Gate Mk II ATR Accessory with Diamond Top-plate & ZnSe lenses (specify spectrometer for baseplate)
- 10503 Golden Gate Mk II ATR Accessory spare volatiles cover
- 10504 Golden Gate spare torque wrench
- 10505 Golden Gate spare Torx head adaptor for Torque wrench
- 10507 Golden Gate ATR Reaction Cell Diamond Top-plate (stainless steel version) & temperature controller (specify country)
- 10508 Golden Gate Mk II ATR Accessory KRS-5 lens upgrade kit
- 10509 Golden Gate spare Torque wrench and Torx head adaptor (combined)
- 10513 Golden Gate ATR Reaction Cell Diamond stirring pressure cap option with stirring motor and controller (stainless steel version) (specify country and voltage)
- 10514 Golden Gate Mk II ATR Accessory Micro Specular Reflectance Top-plate
- 10515 Golden Gate Mk II ATR Accessory with Diamond Top-plate and KRS-5 lenses (specify spectrometer for baseplate)
- 10516 Golden Gate Mk II ATR Accessory with Germanium Top-plate and ZnSe lenses (specify spectrometer for baseplate)
- 10523 Golden Gate Mk II ATR Accessory with Micro Specular Reflectance Top-plate and ZnSe lenses (specify spectrometer for baseplate)
- 10524 Golden Gate Mk II ATR Accessory with Wire Holder Top-plate and ZnSe lenses (specify spectrometer for baseplate)
- 10525 Golden Gate ATR Accessory with Reaction Cell Diamond Top-plate, ZnSe or KRS-5 lenses and temperature controller (specify country) (specify spectrometer for baseplate)
- 10531 Golden Gate Mk II ATR spare Sapphire anvil
- 10532 Golden Gate Mk II ATR spare Pellet anvil
- 10536 Golden Gate Mk II ATR spare Reactive Sample anvil
- 10540 Golden Gate Mk II ATR Heated Diamond Top-plate and temperature controller (specify country)
- 10542 Golden Gate Mk II ATR Accessory with Heated Diamond Top-plate, ZnSe or KRS-5 lenses and temperature controller (specify country) (specify spectrometer for baseplate)
- 10547 Golden Gate Mk II ATR Grooved anvil - narrow gauge
- 10548 Golden Gate Mk II ATR Grooved anvil - wide gauge
- 10549 Golden Gate Mk II ATR Stainless steel flat anvil
- 10552 Golden Gate Mk II ATR Accessory ZnSe lens upgrade kit
- 10563 Golden Gate Mk II ATR Diamond Top-plate
- 10565 Golden Gate Mk II ATR Wire Holder Diamond Top-plate
- 10566 Golden Gate Mk II ATR Germanium ATR Top-plate
- 10567 Golden Gate Mk II ATR Stainless steel large anvil for Germanium ATR Top-plate
- 10568 Golden Gate Mk II ATR Micro Reaction / Flow Cell anvil
- 10569 Golden Gate Mk II ATR View-Thru anvil/bridge assembly
- 10585 Golden Gate ATR Supercritical Fluids Diamond Top-plate and temperature controller (specify country)
- 10586 Golden Gate ATR Accessory with Supercritical Fluids Diamond Top-plate, ZnSe or KRS-5 lenses and temperature controller (specify country) (specify spectrometer for baseplate)
- 10587 Golden Gate ATR Supercritical Fluids Top Plate Graphite Discs (packet of 10)
- 10590 Golden Gate Mk II ATR Low Temperature Diamond Top-plate and temperature controller (specify country)
- 10592 Golden Gate Mk II ATR Accessory with Low Temperature Diamond Top-plate, ZnSe or KRS-5 lenses and temperature controller (specify country) (specify spectrometer for baseplate)

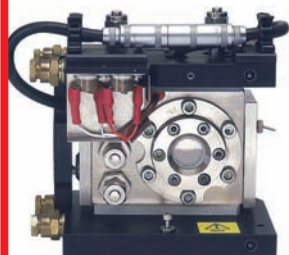
Silver Gate™



Silver Gate™ Evolution Single Reflection ATR 10680

Cost-effective, basic, high throughput single reflection ATR accessory for the FTIR analysis of solids, liquids, gels and pastes - with interchangeable crystal plates.

Advanced Research



High Temperature/High Pressure Cell 05850

Programmable controlled temperatures up to 800 C and pressures from vacuum to 1000 p.s.i.

Variable Angle



25 Reflection ATR 11000

The large number of reflections and the availability of different incidence angles make this accessory ideally suited for the enhancement of small bands in weakly absorbing samples.

Silver Gate™

- GS10680 Silver Gate™ Evolution Optics Unit
Note: the Optics Unit includes a volatiles cover and purge bellows
- GS10682-1 Top plate without clamp bridge
- GS10682-2 Top plate with clamp bridge
Note: GS10682-2 includes both Pellet and Plane Anvil
- GS10683-1 ZnSe flat crystal plate
- GS10683-2 Ge flat crystal plate
- GS10684-1 ZnSe recessed crystal plate
- GS10684-2 Ge recessed crystal plate
- GS10503 Volatiles cover
- GS10532 Pellet Anvil
- GS10567 Plane Anvil
- GS10707 Purge Bellows
-

Advanced Research

- 05850 High Temperature High Pressure Cell with temperature controller
(specify voltage/country)
- 05855 High Temperature High Pressure Cell Advanced Version with temperature controller
(specify voltage/country)
- 05860 High Temperature High Pressure Cell reflectance mode update kit
- 05865 High Temperature High Pressure Cell replacement seal kit
- 05867 High Temperature High Pressure Cell replacement ZnSe pressure certified window assembly
- 05868 High Temperature High Pressure Cell decomposition boats (pkt of 2)
- 05869 High Temperature High Pressure Cell replacement burst disc assembly
- 05902 High Temperature High Pressure Cell replacement seals for window housing to cell body (pkt of 2)
-

Variable Angle

- 11000 25 Reflection ATR Accessory with solids holder and KRS-5 crystal
- 11001 25 Reflection ATR spare Solids holder (no crystal)
- 11002 25 Reflection ATR spare Paste holder (no crystal)
- 11003 25 Reflection ATR spare Liquid holder (no crystal)
- 11004 25 Reflection ATR KRS-5 crystal (45° angle)
- 11006 25 Reflection ATR Germanium crystal (45° angle)
- 11008 25 Reflection ATR spare PTFE Gaskets (1 long, 1 short) (5 pairs) for Liquid holder
- 11009 25 Reflection ATR Silicon crystal (45° angle)
- 11012 25 Reflection ATR KRS-5 crystal (15 reflection, 60° angle)
- 11014 25 Reflection ATR ZnSe crystal (45° angle)

Gateway™



Gateway™ ATR System

11165

An advanced multi-reflection ATR system for the infrared analysis of solids, liquids, pastes and gels.



Flow-Through Top-plate

11116

Process control, 550µl volume, removable crystal with a variety of crystals available for reaction monitoring



Thermostabilised Top-plate

11118

Reaction kinetics, 550µl volume, removable crystal with a stainless steel top plate and Kalrez spacer, heatable to 90°C



Heated Trough Top-plate

11155

An electrically heated top plate with dedicated temperature controller. This top plate is heatable to 200°C with a removable crystal.



Volatiles Cover

11132

Prevents evaporation of volatile samples in trough top plates

Minidiff



Minidiff Plus

04510

The Minidiff Plus diffuse reflectance accessory is designed for routine sampling. High performance solids analysis is made simple through the optimized zero alignment optics and Benchmark™ baseplate mounting system.

Gateway™

- 11116 Gateway ATR 550µl Flow-Through Top-plate assembly with ZnSe crystal (45° angle)
- 11118 Gateway ATR 550µl Thermostabilised Flow Through Top-plate assembly with ZnSe crystal (45° angle)
- 11129 Gateway ATR Kalrez gasket replacement kit for Top-plate P/N's 11130, 11131, 11139 and 11155
- 11132 Gateway ATR Volatiles cover for non-heated Trough Top-plates
- 11133 Gateway ATR Flat Top-plate assembly with ZnSe crystal (45° angle)
- 11134 Gateway ATR Flat Top-plate assembly with Silicon crystal (45° angle)
- 11135 Gateway ATR Flat Top-plate assembly with Germanium crystal (45° angle)
- 11139 Gateway ATR Water Heated / Cooled Top-plate assembly with ZnSe crystal (45° angle)
- 11145 Gateway ATR ZnSe crystal (45° angle) for Trough and Flow Through Top-plates
- 11146 Gateway ATR Silicon crystal (45° angle) for Trough and Flow Through Top-plates
- 11147 Gateway ATR Germanium crystal (45° angle) for Trough and Flow Through Top-plates
- 11150 Gateway ATR Kalrez gaskets for 550µl Flow Through Top-plates (pkt of 3)
- 11152 Gateway ATR Silicone tubing (5m) for Flow Through Top-plates
- 11155 Gateway ATR Electrically Heated Trough Top-plate with ZnSe crystal (45° angle) and temperature controller (specify country)
- 11165 Gateway ATR In-Compartment Kit Complete. Includes optical unit, trough top plate, flat top plate and clamp (specify spectrometer for baseplate)
- 11166 Gateway ATR Trough Top-plate assembly with ZnSe crystal (45° angle)
- 11167 Gateway ATR Kalrez gasket set for Gateway Trough Top-plate (P/N 11166)
- 11170 Gateway ATR In-Compartment Optical Unit
- 11171 Gateway ATR Clamp assembly
- 11200 Gateway ATR Torque wrench for consistent crystal mounting in Trough Top-plates

Minidiff

- 04505 Minidiff Plus sample cup holders with 3 cups (pkt of 2)
- 04506 Minidiff Plus Diabruse abrasive sample pads (9mm diameter) (pkt of 100)
- 04508 Minidiff Plus Diabruse sample holders with 3 pad mounts (pkt of 2)
- 04510 Minidiff Plus Diffuse Reflectance Accessory. Specify spectrometer for baseplate
- 03610 KBr powder (50g)
- 03600 Pestle and Mortar (4cm diameter bowl)

Selector™



Selector™ 19900

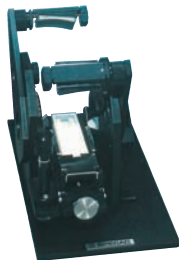
An expandable diffuse reflectance sampling system that can change with your applications. Diffuse reflectance is based upon the collection of radiation that has been diffusely scattered from the sample. The Selector uses an optimized offaxis optics configuration which selectively collects the diffusely reflected components, whilst minimizing the specular component.



Environmental chamber 19930

This accessory allows for the study of diffusely reflecting solid samples in a controlled atmosphere ranging from ambient temperature to 500 °C, and vacuum (10⁻³ Torr) to 500 p.s.i.

Monolayer™



Monolayer™/Grazing Angle Accessory for FT-IR Spectroscopy 19650

A grazing incidence specular reflectance accessory operating at ambient temperatures. The Monolayer™/Grazing Angle Accessory allows the study of insoluble monolayer films at air-water interface in situ using an MCT or InSb detector, and also the analysis of reflective surfaces at grazing incidence angle (8°-85°) using a standard DTGS detector.

Selector™

- 19900 Selector Diffuse Reflectance Accessory (specify spectrometer for baseplate)
- 19915 Selector Diffuse Reflectance Accessory spare 4mm dia. micro sampling cup
- 19916 Selector Diffuse Reflectance Accessory spare 11mm dia. standard sampling cup
- 19917 Selector Diffuse Reflectance Accessory spare tilted cup for full reflectance measurement
- 19918 Selector Diffuse Reflectance Accessory spare Diabrase pad sample mounts (pkt of 2)
- 19919 Selector Diffuse Reflectance Accessory spare Diabrase sample pads 12mm dia. (pkt of 100)
- 19930 Environmental Chamber for Selector Diffuse Reflectance Accessory with temperature controller (specify country) (specify spectrometer for baseplate)
- 19934 Environmental Chamber spare pressure certified top chamber window housing with ZnSe window
- 28000 RS232 Connection Kit for Temperature Controllers of Specac accessories
- 28001 USB Connection Kit for Temperature Controllers of Specac accessories
- 28002 RS485 Connection Kit for Temperature Controllers of Specac accessories
- 03610 KBr powder (50g)

Monolayer™

- 19650 Monolayer/Grazing Angle Accessory (specify spectrometer for baseplate)
- 19662 Monolayer/Grazing Angle Accessory spare PTFE trough platform for monolayer mode samples
- 19663 Monolayer/Grazing Angle Accessory spare aperture stops and holder

Fixed Angle

- 19820 Fixed Angle Specular Reflectance Accessory (specify spectrometer for baseplate)

Transmission

Cyclone™ Gas Cells



Cyclone™ C2

24102

Long Pathlength Gas Cell 0.5m to 2.5m (supplied with KBr windows as standard)

Cyclone™ series heatable long pathlength gas cells have been designed with the serious analyst in mind. These high performance, superior quality cells are backed by a comprehensive range of optional upgrades ensuring that they meet every analytical challenge.



Cyclone™ C5

24105

Long Pathlength Gas Cell 1m to 8m (supplied with KBr windows as standard)

Cyclone™ series heatable long pathlength gas cells have been designed with the serious analyst in mind. These high performance, superior quality cells are backed by a comprehensive range of optional upgrades ensuring that they meet every analytical challenge.



Cyclone™ C10

24110

Long Pathlength Gas Cell 2.1m to 10.6m (supplied with KBr windows as standard)

Cyclone™ series heatable long pathlength gas cells have been designed with the serious analyst in mind. These high performance, superior quality cells are backed by a comprehensive range of optional upgrades ensuring that they meet every analytical challenge.



Purge Bellows

10707

These fit between the optics box of the cell and the spectrometer to allow the purging of transfer optics with inert gases such as nitrogen.



Heating Jacket / High Stability Temperature Controller

24302 (C2) 24305 (C5) 24310 (C10)

The heating jacket simply slides over the gas cell and it can be operated from ambient temperatures up to 200°C.

Cyclone™ Gas Cells

- 24102 Cyclone Gas Cell C2 Fixed Pathlength Cell with KBr windows, glass body and gold mirrors (specify pathlength and spectrometer for baseplate)
- 24102 Cyclone Gas Cell C2 (P/N 24102) with ZnSe windows in place of KBr
- 24102 Cyclone Gas Cell C2 (P/N 24102) with CaF2 windows in place of KBr
- 24102 Cyclone Gas Cell C2 (P/N 24102) with metal body in place of glass body (Note KBr windows not recommended with metal body option)
- 24105 Cyclone Gas Cell C5 Fixed Pathlength Cell with KBr windows, glass body and gold mirrors (specify pathlength and spectrometer for baseplate)
- 24105 Cyclone Gas Cell C5 (P/N 24105) with ZnSe windows in place of KBr
- 24105 Cyclone Gas Cell C5 (P/N 24105) with CaF2 windows in place of KBr
- 24105 Cyclone Gas Cell C5 (P/N 24105) with metal body in place of glass body (Note KBr windows not recommended with metal body option)
- 24105 Cyclone Gas Cell C5 (P/N 24105) with variable pathlength in place of fixed pathlength
- 24110 Cyclone Gas Cell C10 Fixed Pathlength Cell with KBr windows, glass body and gold mirrors (specify pathlength and spectrometer for baseplate)
- 24110 Cyclone Gas Cell C10 (P/N 24110) with ZnSe windows in place of KBr
- 24110 Cyclone Gas Cell C10 (P/N 24110) with CaF2 windows in place of KBr
- 24110 Cyclone Gas Cell C10 (P/N 24110) with metal body in place of glass body (Note KBr windows not recommended with metal body option)
- 24110 Cyclone Gas Cell C10 (P/N 24110) with variable pathlength in place of fixed pathlength
- 24150 Cyclone and Tornado Gas Cell Dessicant Storage Caps
- 24152 Cyclone Gas Cell C2 Gold Mirrors on carriage frame (specify pathlength)
- 24152 Cyclone Gas Cell C5 Gold Mirrors on carriage frame (specify pathlength)
- 24152 Cyclone Gas Cell C10 Gold Mirrors on carriage frame (specify pathlength)
- 24153 Cyclone and Tornado Gas Cell replacement KBr windows (specify C2, C5, C10, T5, T10 or T20 cell)
- 24154 Cyclone and Tornado Gas Cell replacement ZnSe windows (specify C2, C5, C10, T5, T10 or T20 cell)
- 24155 Cyclone and Tornado Gas Cell replacement CaF2 windows (specify C2, C5, C10, T5, T10 or T20 cell)
- 24160 Cyclone and Tornado Gas Cell Pressure Gauge Kit (specify C2, C5, C10, T5, T10 or T20 cell and high or low pressure)
- 24302 Cyclone Gas Cell C2 Heating Jacket and temperature controller (specify country)
- 24305 Cyclone Gas Cell C5 Heating Jacket and temperature controller (specify country)
- 24310 Cyclone Gas Cell C10 Heating Jacket and temperature controller (specify country)
- 10707 Purge Tubes (bellows) 1 pair for all Benchmark(TM) baseplate compatible accessories
- 24500 Laser Alignment Jig for all Benchmark(TM) baseplate compatible accessories

Storm™ Gas Cells



Storm™ 10 Short Pathlength Gas Cell

05000 (10cm Pyrex body)

The Storm™ 10 series gas cells are the ideal choice for measuring the infrared spectra of concentrated gases, gas mixtures and vapors (>1% levels) at ambient temperatures and pressures.



Storm™ 10 Short Pathlength Gas Cell

05800 (10cm Stainless Steel body)

The Storm™ 10 series gas cells are the ideal choice for measuring the infrared spectra of concentrated gases, gas mixtures and vapors (>1% levels) at ambient temperatures and pressures.



Storm™ 10H Short Pathlength Heated Gas Cell

05670

The Storm™ 10H Heated Gas Cell is a single pass, 10cm fixed pathlength design, for the measurement of the infrared spectra of concentrated gases (> 1% levels), gas mixtures and vapors at temperatures up to 250°C. (Comes with temperature controller)

Storm™ Gas Cells

- 05000 Storm 10 Gas Cell Pyrex complete (no windows)
- 05020 Storm 10 and Storm 10H Gas Cell NaCl windows (pair) 47mm dia.
- 05021 Storm 10 Gas Cell KBr windows (pair -thin) 47mm dia.
- 05022 Storm 10 and Storm 10H Gas Cell CaF2 windows (pair) 47mm dia.
- 05023 Storm 10 and Storm 10H Gas Cell BaF2 windows (pair) 47mm dia.
- 05030 Storm 10 Gas Cell 3" x 2" Mount Plate
- 05040 Storm 10 Gas Cell Pyrex Complete Seal Kit (for windows and stopcocks)
- 05096 Storm 10 and Storm 10H Gas Cell ZnSe windows (pair) 47mm dia.
- 05121 Storm 10H Gas Cell KBr windows (pair - thick) 47mm dia.
- 05662 Storm 10H Gas Cell stainless steel flow tubes (pkt of 10)
- 05665 Storm 10H Gas Cell injection septa (pkt of 10)
- 05667 Storm 10H Gas Cell Complete Seal Kit (for windows and valves)
- 05670 Storm 10H Gas Cell with temperature controller
(specify country) and gas cell mount (no windows)
- 05800 Storm 10 Gas Cell Stainless Steel complete (no windows)
- 05803 Storm 10 Gas Cell Stainless Steel vacuum valve
- 05804 Storm 10 Gas Cell Stainless Steel seal kit (for windows and valves)

Tornado™ Gas Cells



Tornado™ T5

24205

(Pathlengths ranging from 1m to 8m in 1m steps)

The Tornado™ series of fixed, long pathlength gas cells is the latest development in low-cost, high performance cells designed for measuring the infrared spectra of gases and vapors at ambient temperatures and pressures.



Tornado™ T10

24210

(Pathlengths ranging from 2.1m to 10.6m in 1.06m steps)

The Tornado™ series of fixed, long pathlength gas cells is the latest development in low-cost, high performance cells designed for measuring the infrared spectra of gases and vapors at ambient temperatures and pressures.



Tornado™ T20

24220

(Pathlengths ranging from 2m to 20m in 2m steps)

The Tornado™ series of fixed, long pathlength gas cells is the latest development in low-cost, high performance cells designed for measuring the infrared spectra of gases and vapors at ambient temperatures and pressures.



Desiccant Storage Caps

24150

These caps are designed to fit over the optical inlet and outlet ports of the Tornado™ series gas cells to seal the transfer optics when the cells are not in use.



Mirror Carriage Assembly

24252

Additional mirror carriages can be specified for use within a single Tornado™ body. This feature greatly enhances the analytical flexibility of the series, and significantly reduces operating costs.



Pressure Gauge Kit

24160

Gauges are designed for low pressure operation (vacuum to 15 p.s.i.) and an integral pressure relief valve ensures that cells are automatically depressurised in the event of accidental over pressurisation.

Tornado™ Gas Cells

- 24161 Tornado Gas Cell Vacuum/Gas Inlet & Outlet Taps with push on connector
- 24205 Tornado Gas Cell T5 Fixed Pathlength Gas Cell with KBr windows, glass body and gold mirrors (specify pathlength and spectrometer for baseplate)
- 24205-1 Tornado Gas Cell T5 (P/N 24205) with ZnSe windows in place of KBr
- 24205-2 Tornado Gas Cell T5 (P/N 24205) with CaF2 windows in place of KBr
- 24210 Tornado Gas Cell T10 Fixed Pathlength Gas Cell with KBr windows, glass body and gold mirrors (specify pathlength and spectrometer for baseplate)
- 24210-1 Tornado Gas Cell T10 (P/N 24210) with ZnSe windows in place of KBr
- 24210-2 Tornado Gas Cell T10 (P/N 24210) with CaF2 windows in place of KBr
- 24220 Tornado Gas Cell T20 Fixed Pathlength Gas Cell with KBr windows, glass body and gold mirrors (specify pathlength and spectrometer for baseplate)
- 24220-1 Tornado Gas Cell T20 (P/N 24220) with ZnSe windows in place of KBr
- 24220-2 Tornado Gas Cell T20 (P/N 24220) with CaF2 windows in place of KBr
- 24252-1 Tornado Gas Cell T5 Gold mirrors on carriage frame (specify pathlength)
- 24252-2 Tornado Gas Cell T10 Gold mirrors on carriage frame (specify pathlength)
- 24252-3 Tornado Gas Cell T20 Gold mirrors on carriage frame (specify pathlength)
- 10707 Purge Tubes (bellows) 1 pair for all Benchmark(TM) baseplate compatible accessories
- 24150 Cyclone and Tornado Gas Cell Desiccant Storage Caps
- 24160 Cyclone and Tornado Gas Cell Pressure Gauge Kit (specify C2, C5, C10, T5, T10 or T20 cell and high or low pressure)
- 24153 Cyclone and Tornado Gas Cell replacement KBr windows (specify C2, C5, C10, T5, T10 or T20 cell)
- 24154 Cyclone and Tornado Gas Cell replacement ZnSe windows (specify C2, C5, C10, T5, T10 or T20 cell)
- 24155 Cyclone and Tornado Gas Cell replacement CaF2 windows (specify C2, C5, C10, T5, T10 or T20 cell)

Typhoon™ Gas Cells



Typhoon Series Process Gas Cells

30100 - 30130

Prospect™ Typhoon™ series of gas cells are designed for the on-line measurement of the spectra of process gases and vapors using fiber optics.

Omni Cell™ Liquid Cells



The Omni Cell™ System

01800

A Universal Transmission Cell for the analysis of liquids and mulls in FTIR or Dispersive Spectroscopy. The Omni-Cell™ System is a novel approach to the analysis of liquid samples in transmission spectroscopy - one cell is suitable for all applications.

Typhoon™ Gas Cells

- 30100 Typhoon™ T20 - 20cm Process Gas Cell in Stainless Steel 316L
 - 30110 Typhoon™ T50 - 50cm Process Gas Cell in Stainless Steel 316L
 - 30120 Typhoon™ T20 - 20cm Process Gas Cell in Hastelloy® C276
 - 30130 Typhoon™ T50 - 50cm Process Gas Cell in Hastelloy® C276
- (specify wavelength range, window seals material optional features for all)

Omni Cell™ Liquid Cells

- 01110 Luer Syringe (2ml volume)
- 01800 Omni-Cell Body With Mount
- 01810 Omni-Cell NaCl windows rectangular (pair) for liquid cells
- 01811 Omni-Cell KBr windows rectangular (pair) for liquid cells
- 01812 Omni-Cell CaF₂ windows rectangular (pair) for liquid cells
- 01813 Omni-Cell BaF₂ windows rectangular (pair) for liquid cells
- 01814 Omni-Cell ZnSe windows rectangular (pair) for liquid cells
- 01815 Omni-Cell KRS-5 windows rectangular (pair) for liquid cells
- 01816 Omni-Cell CsI windows rectangular (pair) for liquid cells
- 01817 Omni-Cell CsBr windows rectangular (pair) for liquid cells
- 01818 Omni-Cell Fused Silica (IR) windows rectangular (pair) for liquid cells
- 01819 Omni-Cell AgBr windows rectangular (pair) for liquid cells
- 01820 Omni-Cell Silicon windows rectangular (pair) for liquid cells
- 01821 Omni-Cell Polythene windows rectangular (pair) for liquid cells
- 01830 Omni-Cell NaCl windows circular 25mm dia. (pair) for mull cells
- 01831 Omni-Cell KBr windows circular 25mm dia. (pair) for mull cells
- 01832 Omni-Cell CaF₂ windows circular 25mm dia. (pair) for mull cells
- 01833 Omni-Cell BaF₂ windows circular 25mm dia. (pair) for mull cells
- 01834 Omni-Cell ZnSe windows circular 25mm dia. (pair) for mull cells
- 01835 Omni-Cell KRS-5 windows circular 25mm dia. (pair) for mull cells
- 01836 Omni-Cell CsI windows circular 25mm dia. (pair) for mull cells
- 01837 Omni-Cell CsBr windows circular 25mm dia. (pair) for mull cells
- 01838 Omni Cell Fused Silica (IR) windows circular 25mm dia. (pair) for mull cells
- 01839 Omni-Cell AgBr windows circular 25mm dia. (pair) for mull cells
- 01840 Omni-Cell Silicon windows circular 25mm dia. (pair) for mull cells
- 01841 Omni-Cell Polythene windows circular 25mm dia. (pair) for mull cells
- 01850 Omni-Cell spacers PTFE rectangular 0.05mm (pkt of 5) for liquid cells

continued overleaf...

Omni Cell™ Liquid Cells - *continued*

- 01851 Omni-Cell spacers PTFE rectangular 0.10mm (pkt of 5) for liquid cells
- 01852 Omni-Cell spacers PTFE rectangular 0.20mm (pkt of 5) for liquid cells
- 01853 Omni-Cell spacers PTFE rectangular 0.50mm (pkt of 5) for liquid cells
- 01854 Omni-Cell spacers PTFE rectangular 1.00mm (pkt of 5) for liquid cells
- 01855 Omni-Cell spacers Lead rectangular 0.025mm (pkt of 5) for liquid cells
- 01856 Omni-Cell spacers Lead rectangular 0.05mm (pkt of 5) for liquid cells
- 01857 Omni-Cell spacers Lead rectangular 0.10mm (pkt of 5) for liquid cells
- 01858 Omni-Cell spacers Lead rectangular 0.20mm (pkt of 5) for liquid cells
- 01859 Omni-Cell spacers Lead rectangular 0.50mm (pkt of 5) for liquid cells
- 01860 Omni-Cell spacers Lead rectangular 1.00mm (pkt of 5) for liquid cells
- 01861 Omni-Cell spacers Mylar rectangular 0.006mm (pkt of 5) for liquid cells
- 01862 Omni-Cell spacers Mylar rectangular 0.012mm (pkt of 5) for liquid cells
- 01863 Omni-Cell spacers Mylar rectangular 0.025mm (pkt of 5) for liquid cells
- 01864 Omni-Cell spacers PTFE rectangular assorted (pkt of 10) for liquid cells
- 01870 Omni-Cell spacers PTFE circular 0.05mm (pkt of 5) for mull cells
- 01871 Omni-Cell spacers PTFE circular 0.10mm (pkt of 5) for mull cells
- 01872 Omni-Cell spacers PTFE circular 0.20mm (pkt of 5) for mull cells
- 01873 Omni-Cell spacers PTFE circular 0.50mm (pkt of 5) for mull cells
- 01874 Omni-Cell spacers PTFE circular 1.00mm (pkt of 5) for mull cells
- 01875 Omni-Cell spacers Lead circular 0.025mm (pkt of 5) for mull cells
- 01876 Omni-Cell spacers Lead circular 0.05mm (pkt of 5) for mull cells
- 01877 Omni-Cell spacers Lead circular 0.10mm (pkt of 5) for mull cells
- 01878 Omni-Cell spacers Lead circular 0.20mm (pkt of 5) for mull cells
- 01879 Omni-Cell spacers Lead circular 0.50mm (pkt of 5) for mull cells
- 01880 Omni-Cell spacers Lead circular 1.00mm (pkt of 5) for mull cells
- 01881 Omni-Cell spacers Mylar circular 0.006mm (pkt of 5) for mull cells
- 01882 Omni-Cell spacers Mylar circular 0.012mm (pkt of 5) for mull cells
- 01883 Omni-Cell spacers Mylar circular 0.025mm (pkt of 5) for mull cells
- 01890 Omni-Cell rear neoprene gaskets (pkt of 2)
- 01891 Omni-Cell quick release nuts for cell body (pkt of 4)
- 01892 Omni-Cell Luer plugs for cell body (pkt of 2)
- 01893 Omni-Cell packing spacer for thin windows (pkt of 1)
- 01910 Omni-Cell NaCl permanently sealed window unit 0.025mm for liquid cells
- 01911 Omni-Cell KBr permanently sealed window unit 0.025mm for liquid cells
- 01912 Omni-Cell CaF₂ permanently sealed window unit 0.025mm for liquid cells
- 01913 Omni-Cell BaF₂ permanently sealed window unit 0.025mm for liquid cells
- 01914 Omni-Cell ZnSe permanently sealed window unit 0.025mm for liquid cells
- 01915 Omni-Cell KRS-5 permanently sealed window unit 0.025mm for liquids cells
- 01916 Omni-Cell CsI permanently sealed window unit 0.025mm for liquid cells
- 01917 Omni-Cell CsBr permanently sealed window unit 0.025mm for liquid cells
- 01918 Omni-Cell Fused Silica (IR) permanently sealed window unit 0.025mm for liquid cells
- 01920 Omni-Cell NaCl permanently sealed window unit 0.05mm for liquid cells
- 01921 Omni-Cell KBr permanently sealed window unit 0.05mm for liquid cells
- 01922 Omni-Cell CaF₂ permanently sealed window unit 0.05mm for liquid cells

Omni Cell™ Liquid Cells - *continued*

- 01923 Omni-Cell BaF₂ permanently sealed window unit 0.05mm for liquid cells
- 01924 Omni-Cell ZnSe permanently sealed window unit 0.05mm for liquid cells
- 01925 Omni-Cell KRS-5 permanently sealed window unit 0.05mm for liquid cells
- 01926 Omni-Cell CsI permanently sealed window unit 0.05mm for liquid cells
- 01927 Omni-Cell CsBr permanently sealed window unit 0.05mm for liquid cells
- 01928 Omni-Cell Fused Silica (IR) permanently sealed window unit 0.05mm for liquid cells
- 01930 Omni-Cell NaCl permanently sealed window unit 0.10mm for liquid cells
- 01931 Omni-Cell KBr permanently sealed window unit 0.10mm for liquid cells
- 01932 Omni-Cell CaF₂ permanently sealed window unit 0.10mm for liquid cells
- 01933 Omni-Cell BaF₂ permanently sealed window unit 0.10mm for liquid cells
- 01934 Omni-Cell ZnSe permanently sealed window unit 0.10mm for liquid cells
- 01935 Omni-Cell KRS-5 permanently sealed window unit 0.10mm for liquid cells
- 01936 Omni-Cell CsI permanently sealed window unit 0.10mm for liquid cells
- 01937 Omni-Cell CsBr permanently sealed window unit 0.10mm for liquid cells
- 01938 Omni-Cell Fused Silica (IR) permanently sealed window unit 0.10mm for liquid cells
- 01940 Omni-Cell NaCl permanently sealed window unit 0.20mm for liquid cells
- 01941 Omni-Cell KBr permanently sealed window unit 0.20mm for liquid cells
- 01942 Omni-Cell CaF₂ permanently sealed window unit 0.20mm for liquid cells
- 01943 Omni-Cell BaF₂ permanently sealed window unit 0.20mm for liquid cells
- 01944 Omni-Cell ZnSe permanently sealed window unit 0.20mm for liquid cells
- 01945 Omni-Cell KRS-5 permanently sealed window unit 0.20mm for liquid cells
- 01946 Omni-Cell CsI permanently sealed window unit 0.20mm for liquid cells
- 01947 Omni-Cell CsBr permanently sealed window unit 0.20mm for liquid cells
- 01948 Omni-Cell Fused Silica (IR) permanently sealed window unit 0.20mm for liquid cells
- 01950 Omni-Cell NaCl permanently sealed window unit 0.50mm for liquid cells
- 01951 Omni-Cell KBr permanently sealed window unit 0.50mm for liquid cells
- 01952 Omni-Cell CaF₂ permanently sealed window unit 0.50mm for liquid cells
- 01953 Omni-Cell BaF₂ permanently sealed window unit 0.50mm for liquid cells
- 01954 Omni-Cell ZnSe permanently sealed window unit 0.50mm for liquid cells
- 01955 Omni-Cell KRS-5 permanently sealed window unit 0.50mm for liquid cells
- 01956 Omni-Cell CsI permanently sealed window unit 0.50mm for liquid cells
- 01957 Omni-Cell CsBr permanently sealed window unit 0.50mm for liquid cells
- 01958 Omni-Cell Fused Silica (IR) permanently sealed window unit 0.50mm for liquid cells
- 01960 Omni-Cell NaCl permanently sealed window unit 1.00mm for liquid cells
- 01961 Omni-Cell KBr permanently sealed window unit 1.00mm for liquid cells
- 01962 Omni-Cell CaF₂ permanently sealed window unit 1.00mm for liquid cells
- 01963 Omni-Cell BaF₂ permanently sealed window unit 1.00mm for liquid cells
- 01964 Omni-Cell ZnSe permanently sealed window unit 1.00mm for liquid cells
- 01965 Omni-Cell KRS-5 permanently sealed window unit 1.00mm for liquid cells
- 01966 Omni-Cell CsI permanently sealed window unit 1.00mm for liquid cells
- 01967 Omni-Cell CsBr permanently sealed window unit 1.00mm for liquid cells
- 01968 Omni-Cell Fused Silica (IR) permanently sealed window unit 1.00mm for liquid cells
- 03620 Bottle of Nujol (25ml)
- 03621 Bottle of Fluorolube (25ml)

Liquid and Solid Sample Cells



Heatable, Sealed or Demountable cell

20500 - 20519

Choice of window material and pathlength. Includes Luer fittings and Stainless Steel plugs. Cells can be used with 21525 VTC (-190 to 250C), see parts list for compatibility.



Heatable, Sealed or Demountable flow cells

20560 - 20594

Choice of window material and pathlength. Selected flow cells can be used with 21525 VTC (-190 to 250C), see parts list for compatibility.

Liquid and Solid Sample Cells

- 20500 Heatable Liquid Cell complete sealed liquid cell with NaCl windows and lead spacer (specify pathlength)
- 20501 Heatable Liquid Cell complete sealed liquid cell with KBr windows windows and lead spacer (specify pathlength)
- 20502 Heatable Liquid Cell complete sealed liquid cell with CaF₂ windows and lead spacer (specify pathlength)
- 20503 Heatable Liquid Cell complete sealed liquid cell with BaF₂ windows and lead spacer (specify pathlength)
- 20508 Heatable Liquid Cell complete sealed liquid cell with ZnSe windows and lead spacer (specify pathlength)
- 20510 Heatable Liquid Cell demountable cell with NaCl windows and PTFE spacer (specify pathlength)
- 20511 Heatable Liquid Cell demountable cell with KBr windows and PTFE spacer (specify pathlength)
- 20512 Heatable Liquid Cell demountable cell with CaF₂ windows and PTFE spacer (specify pathlength)
- 20513 Heatable Liquid Cell demountable cell with BaF₂ windows and PTFE spacer (specify pathlength)
- 20519 Heatable Liquid Cell demountable cell with ZnSe windows and PTFE spacer (specify pathlength)
- 20520 Heatable Liquid Cell replacement NaCl windows (pair)
- 20521 Heatable Liquid Cell replacement KBr windows (pair)
- 20522 Heatable Liquid Cell replacement CaF₂ windows (pair)
- 20523 Heatable Liquid Cell replacement BaF₂ windows (pair)
- 20535 Heatable Liquid Cell spacers tin (pkt of 10) (specify thickness 6 μ m or 12 μ m for demountable cells)
- 20540 Heatable Liquid Cell spacers lead (pkt of 10) for demountable cells (specify pathlength)
- 20560 Heatable Sealed Liquid Flow Cell with NaCl windows (specify pathlength). Can be used in Variable Temperature Cell (P/N 21525)
- 20561 Heatable Sealed Liquid Flow Cell with KBr windows (specify pathlength). Can be used in Variable Temperature Cell (P/N 21525)
- 20562 Heatable Sealed Liquid Flow Cell with CaF₂ windows (specify pathlength). Can be used in Variable Temperature Cell (P/N 21525)
- 20563 Heatable Sealed Liquid Flow Cell with BaF₂ windows (specify pathlength). Can be used in Variable Temperature Cell (P/N 21525)
- 20566 Heatable Sealed Liquid Flow Cell with ZnSe windows (specify pathlength). Can be used in Variable Temperature Cell (P/N 21525)
- 20570 Heatable Sealed Liquid Flow Cell with NaCl windows (specify pathlength). Not suitable for Variable Temperature Cell (P/N 21525)
- 20571 Heatable Sealed Liquid Flow Cell with KBr windows (specify pathlength). Not suitable for Variable Temperature Cell (P/N 21525)
- 20572 Heatable Sealed Liquid Flow Cell with CaF₂ windows (specify pathlength). Not suitable for Variable Temperature Cell (P/N 21525)
- 20573 Heatable Sealed Liquid Flow Cell with BaF₂ windows (specify pathlength). Not suitable for Variable Temperature Cell (P/N 21525)
- 20576 Heatable Sealed Liquid Flow Cell with ZnSe windows (specify pathlength). Not suitable for Variable Temperature Cell (P/N 21525)
- 20580 Heatable Demountable Liquid Flow Cell with NaCl windows (specify pathlength). Not suitable for Variable Temperature Cell (P/N 21525)
- 20581 Heatable Demountable Liquid Flow Cell with KBr windows (specify pathlength). Not suitable for Variable Temperature Cell (P/N 21525)
- 20582 Heatable Demountable Liquid Flow Cell with CaF₂ windows (specify pathlength). Not suitable for Variable Temperature Cell (P/N 21525)

Liquid and Solid Sample Cells - continued



Solids Holders

20610 (for 21525 Variable Temperature Cell)



Solids Holders

20600 (for 20710 & 20730 Heating Jackets)

Liquid Cells - Advanced Heatable High Pressure



Advanced High Pressure Heatable Liquid Cell

05910

High Pressure short pathlength liquid cell heatable up to 5000psi with sapphire windows.

Liquid and Solid Sample Cells - *continued*

- 20583 Heatable Demountable Liquid Flow Cell with BaF₂ windows (specify pathlength). Not suitable for Variable Temperature Cell (P/N 21525)
- 20586 Heatable Demountable Liquid Flow Cell with ZnSe windows (specify pathlength). Not suitable for Variable Temperature Cell (P/N 21525)
- 20590 Heatable Demountable Liquid Flow Cell with NaCl windows (specify pathlength). Can be used in Variable Temperature Cell (P/N 21525)
- 20591 Heatable Demountable Liquid Flow Cell with KBr windows (specify pathlength). Can be used in Variable Temperature Cell (P/N 21525)
- 20592 Heatable Demountable Liquid Flow Cell with CaF₂ windows (specify pathlength). Can be used in Variable Temperature Cell (P/N 21525)
- 20593 Heatable Demountable Liquid Flow Cell with BaF₂ windows (specify pathlength). Can be used in Variable Temperature Cell (P/N 21525)
- 20594 Heatable Demountable Liquid Flow Cell with ZnSe windows (specify pathlength). Can be used in Variable Temperature Cell (P/N 21525)
- 20596 Heatable Liquid Cell replacement ZnSe windows (pair)
- 20598 Heatable Liquid Cell replacement Spectrosil B (UV) windows (pair)
- 20040 Heatable Liquid Cell spare PTFE gaskets (pkt of 10) for demountable cells
- 20050 Heatable Liquid Cell assorted PTFE spacers, 2 of each size (pkt of 12) for demountable cells
- 20060 Heatable Liquid Cell Rear Teflon gaskets (10) for Heatable Liquid Cells
- 20070 Heatable Liquid Cell spare PTFE spacers (pkt of 10) (specify thickness) for demountable cells
- 20600 Solids holder for 20710 & 20730
- 20610 Solids holder for the VTC
- 20740 Heated Sample Cell ambient temperature holder with 3" x 2" backplate mount

Gas Cells - Replacement Gas Exchange Solids Holders

- 20633 Gas Exchange Solids Holder replacement NaCl windows (front and rear)
- 20634 Gas Exchange Solids Holder replacement KBr windows (front and rear)
- 20635 Gas Exchange Solids Holder replacement CaF₂ windows (front and rear)
- 20636 Gas Exchange Solids Holder replacement BaF₂ windows (front and rear)

Liquid Cells - Advanced Heatable High Pressure

- 05910 High Pressure short pathlength liquid cell with ZnSe, Sapphire or Spec B windows to 2000psi pressure rating. (Choose 0.1, 0.2, 0.5, 1.0 and 2.0mm pathlength)
- 05910-1 Add price for Sapphire windows to 2000psi pressure rating. (Choose 0.1, 0.2, 0.5, 1.0 and 2.0mm pathlength)
- 05915 High Pressure short pathlength liquid cell with Sapphire or Spec B windows to 5000psi pressure rating. (Choose 0.1, 0.2, 0.5, 1.0 and 2.0mm pathlength)
- 05915-1 Add price for Sapphire windows to 5000psi pressure rating. (Choose 0.1, 0.2, 0.5, 1.0 and 2.0mm pathlength)
- 05920 High Pressure long pathlength liquid cell with ZnSe, Sapphire or Spec B windows to 2000psi pressure rating. (Choose 5.0 or 10.0mm pathlength)
- 05920-1 Add price for Sapphire windows to 2000psi pressure rating. (Choose 5.0 or 10.0mm pathlength)
- 05925 High Pressure long pathlength liquid cell with Sapphire or Spec B windows to 5000psi pressure rating. (Choose 5.0 or 10.0mm pathlength)
- 05925-1 Add price for Sapphire windows to 5000psi pressure rating. (Choose 5.0 and 10.0mm pathlength)

Variable Pathlength Cells



Variable Pathlength Liquid Cell

07500

For transmission analysis of liquids with adjustment of sample pathlength in situ.

Variable Temperature Cells



Variable Temperature Cell

21525

Primarily used for MID IR analysis of Liquids and Solids Between -190°C and 250°C . The Variable Temperature Cell consists of a vacuum jacket that contains a refrigerant dewar/cell holder assembly and a heating block that contains the appropriate cell.



Variable Temperature Cell with Four Ports

21530

Used for Raman, Fluorescence applications. The Variable Temperature Cell samples are contained in cuvette or bulb.

Variable Pathlength Cells

- 07020 Variable Pathlength Cell 7500 Series NaCl windows (pair)
- 07021 Variable Pathlength Cell 7500 Series KBr windows (pair)
- 07022 Variable Pathlength Cell 7500 Series CaF2 windows (pair)
- 07023 Variable Pathlength Cell 7500 Series BaF2 windows (pair)
- 07024 Variable Pathlength Cell 7500 Series CsI windows (pair)
- 07025 Variable Pathlength Cell 7500 Series CsBr windows (pair)
- 07026 Variable Pathlength Cell 7500 Series KRS-5 windows (pair)
- 07027 Variable Pathlength Cell 7500 Series Fused Silica (IR) windows (pair)
- 07028 Variable Pathlength Cell 7500 Series AgBr windows (pair)
- 07095 Variable Pathlength Cell 7500 Series Polyethylene windows (pair)
- 07096 Variable Pathlength Cell 7500 Series ZnSe windows (pair)
- 07097 Variable Pathlength Cell 7500 Series Silicon windows (pair)
- 07130 Variable Pathlength Cell 7500 Series spare neoprene gaskets (pkt of 10)
- 07135 Variable Pathlength Cell 7500 Series spare Luer plug and reservoir cap
- 07140 Variable Pathlength Cell 7500 Series spare PTFE gaskets (0.1mm) (pkt of 10)
- 07150 Variable Pathlength Cell 7500 Series spare window Key
- 07500 Variable Pathlength Cell 7500 Series fitted with NaCl non rotating windows
- 07501 Variable Pathlength Cell 7500 Series fitted with KBr non rotating windows
- 07502 Variable Pathlength Cell 7500 Series fitted with CaF2 non rotating windows
- 07503 Variable Pathlength Cell 7500 Series fitted with BaF2 non rotating windows
- 07509 Variable Pathlength Cell 7500 Series fitted with ZnSe non rotating windows
- 01110 Luer Syringe (2ml volume)

Variable Temperature Cells

- 21525 Variable Temperature Cell with temperature controller and NaCl windows (pair) for jacket (specify country for controller power cables and spectrometer for baseplate)
- 21530 Variable Temperature Cell Four Port Cuvette version with temperature controller and Fused Silica (UV) windows (pair) for jacket (specify country for controller power cables and spectrometer for baseplate)
- 20800 Variable Temperature Cell replacement NaCl windows (pair) for jacket
- 20801 Variable Temperature Cell replacement KBr windows (pair) for jacket
- 20802 Variable Temperature Cell replacement CaF2 windows (pair) for jacket
- 20803 Variable Temperature Cell replacement BaF2 windows (pair) for jacket
- 20810 Variable Temperature Cell replacement set of O-rings
- 20813 Variable Temperature Cell replacement cell holder heaters
- 20814 Variable Temperature Cell replacement jacket window heaters
- 20896 Variable Temperature Cell replacement ZnSe windows (pair) for jacket
- 20898 Variable Temperature Cell replacement Spectrosil B (UV) windows (pair) for jacket
- 20610 Variable Temperature Cell Solids Holder
- 20800 Variable Temperature Cell replacement NaCl windows (pair) for jacket
- 20801 Variable Temperature Cell replacement KBr windows (pair) for jacket
- 20650 Variable Temperature Cell 13mm Disc Holder (Can also be used in P/N 20730)

Heated Jackets



Electrical Heating Jacket
20730

For transmission studies of liquids or solids up to 250 °C the Electrical Heating Jacket, used with a range of liquid or solid sample holders - is ideal.



Water Heating Jacket
20710

The Water Heating Jacket is similar to the Electrical Heating Jacket, but it uses circulating water to heat the sample cell. A jacket around the circular aperture is filled with a solution, for example water, heated by a thermocirculating system.

Diamond Compression & Microfocus Beam



Diasqueeze Plus Diamond Compression Cell
02550

A universal diamond compression cell specially designed for FTIR microscopes and the Specac Microfocus Beam Condenser



Microfocus Beam Condenser
02560

In combination with the Diasqueeze Plus Diamond Compression Cell, this system can be used for the analysis of virtually all solid samples by transmission.

Micro Compression Cells

Heated Jackets

- 20730 Electrically Heated Jacket with temperature controller (specify country)
- 28000 RS232 Connection Kit for Temperature Controllers of Specac accessories
- 28001 USB Connection Kit for Temperature Controllers of Specac accessories
- 28002 RS485 Connection Kit for Temperature Controllers of Specac accessories
- 20710 Water Heating Jacket Includes, Water Heating Jacket on a 3" x 2" mount
- 20600 Electrical Heating Jacket Solids Holder

Diamond Compression & Microfocus Beam

- 02550 Diasqueeze Plus Diamond Compression Cell
- 02551 Diasqueeze Plus Kit with ZnSe lenses (includes Microfocus beam condenser). Specify spectrometer for baseplate
- 02552 Diasqueeze Plus Kit with KRS-5 lenses (includes Microfocus beam condenser). Specify spectrometer for baseplate
- 02560 Microfocus Beam Condenser with ZnSe lenses. Specify spectrometer for baseplate
- 02561 Microfocus Beam Condenser with KRS-5 lenses. Specify spectrometer for baseplate
- 02570 Microfocus Beam Condenser KRS-5 Lens Kit
- 02571 Microfocus Beam Condenser ZnSe Lens Kit
- 02303 Stainless steel micro spatula
- 02508 Sample forceps
- 02509 Stainless steel sample needle
- 02510 Sample preparation knife, with blades (10) and blade remover

Micro Compression Cells

- 09070 Micro Compression Cell NaCl windows circular 13mm dia (pair)
- 09071 Micro Compression Cell KBr windows circular 13mm dia (pair)
- 09072 Micro Compression Cell CaF2 windows circular 13mm dia (pair)
- 09073 Micro Compression Cell BaF2 windows circular 13mm dia (pair)
- 09076 Micro Compression Cell ZnSe windows circular 13mm dia (pair)

Notes

Sample Preparation



Presses



Atlas™ Auto T25 & T8 Hydraulic Press

25440 25460 25441 25461 25442 25462

The Atlas™ Auto Presses T25 and T8 are programmable, microprocessor controlled, power assisted hydraulic presses, operating to 25 Tons and 8 Tons respectively. They have been designed for a wide variety of pressing applications including XRF and IR sample preparation. Both Presses are fully compatible with Specac dies and other sample preparation.



Atlas™ Power T25 & T8 Hydraulic Press

25400 25401 25411

The Atlas™ Series Power Presses T25 and T8, are power assisted hydraulic presses operating to 25 Tons and 8 Tons respectively. They have been designed to handle a wide variety of pressing applications, including XRF and IR sample preparation. Both Presses are fully compatible with Specac dies and other sample preparation.



15-Ton (15011) and 25-Ton (25011) Manual Hydraulic Presses

15011

The Specac 15 and 25 Ton Manual Hydraulic Presses have been designed to handle a wide variety of pressing applications. They are specifically suited to the preparation of KBr disks using the Specac Evacuatable Pellet Die assembly. They can also be used with Specac Heated Platens for applications such as the preparation of thin polymer films.

Presses

- 15011 Manual Hydraulic Press 15 tons maximum load
- 15051 Manual Hydraulic Press Kit to convert 15 ton press to read 0-1 ton load
- 15052 Manual Hydraulic Press Kit to convert 15 ton press to read 0-2 ton load
- 15055 Manual Hydraulic Press Kit to convert 15 ton press to read 0-5 ton load
- 15100 Manual Hydraulic Press Seals and gaskets set (complete) for 15 ton and 25 ton presses
- 15101 Manual Hydraulic Press spare hydraulic oil (1 litre)
- 25011 Manual Hydraulic Press 25 tons maximum load
- 25400 Atlas Power T8 Press (230V, 50Hz, UK/EU)
- 25401 Atlas Power T8 Press (110V, 60Hz, USA)
- 25402 Atlas Power T8 Press (110V, 50/60Hz, Japan)

- 25420 Atlas Power T25 Press (230V, 50Hz, UK/EU)
- 25421 Atlas Power T25 Press (110V, 60Hz, USA)
- 25422 Atlas Power T25 Press (110V, 50/60Hz, Japan)
- 25440 Atlas Automatic T8 Press (230V, 50Hz, UK/EU)
- 25441 Atlas Automatic T8 Press (110V, 60Hz, USA)
- 25442 Atlas Automatic T8 Press (110V, 50/60Hz, Japan)
- 25460 Atlas Automatic T25 Press (230V, 50Hz, UK/EU)
- 25461 Atlas Automatic T25 Press (110V, 60Hz, USA)
- 25462 Atlas Automatic T25 Press (110V, 50/60Hz, Japan)

Dies

- 25410 Atlas 32mm Lightweight Evacuatable Pellet Die Complete
- 25411 Atlas 40mm Lightweight Evacuatable Pellet Die Complete
- 25412 Atlas 32mm Lightweight Evacuatable Pellet Die body
- 25413 Atlas 32mm Lightweight Evacuatable Pellet Die plunger
- 25414 Atlas 32mm Lightweight Evacuatable Pellet Die base
- 25415 Atlas 32mm Lightweight Evacuatable Pellet Die O-ring kit
- 25416 Atlas 40mm Lightweight Evacuatable Pellet Die body
- 25417 Atlas 40mm Lightweight Evacuatable Pellet Die plunger
- 25418 Atlas 40mm Lightweight Evacuatable Pellet Die base
- 25419 Atlas 40mm Lightweight Evacuatable Pellet Die O-ring kit
- 03000 Evacuatable Pellet Die Complete 13mm dia.
- 03010 Evacuatable Pellet Die Pellets (pair) 13mm dia.
- 03020 Evacuatable Pellet Die O-Ring Kit 13mm dia.
- 03025 Evacuatable Pellet Die Perspex Extractor Ring for 10, 13 and 16mm dia.
- 03030 Evacuatable Pellet Die Plunger 13mm dia.
- 03040 Evacuatable Pellet Die Body 13mm dia.
- 03050 Evacuatable Pellet Die Base for 5, 10 and 13 mm dia.
- 03060 Evacuatable Pellet Die Complete 5mm dia.
- 03061 Evacuatable Pellet Die Pellets (pair) 5mm dia.
- 03062 Evacuatable Pellet Die O-Ring Kit 5mm dia.
- 03063 Evacuatable Pellet Die Plunger 5mm dia.
- 03064 Evacuatable Pellet Die Body 5mm dia.
- 03069 Evacuatable Pellet Die Perspex Extractor Ring 5mm dia.

Dies



Evacuatable Pellet Dies

03000 - 03521

Specac produces a wide range of 440C hardened stainless steel Evacuatable Pellet Dies, used for compacting powdered samples into disks or briquettes.

These dies are designed for use with the Specac Hydraulic Presses.

Dies - *continued*

- 03100 Evacuable Pellet Die Complete 10mm dia.
- 03101 Evacuable Pellet Die Pellets (pair) 10mm dia.
- 03102 Evacuable Pellet Die O-Ring Kit 10mm dia.
- 03103 Evacuable Pellet Die Plunger 10mm dia.
- 03104 Evacuable Pellet Die Body 10mm dia.
- 03165 Evacuable Pellet Die Complete 20mm dia.
- 03166 Evacuable Pellet Die Pellets (pair) 20mm dia.
- 03167 Evacuable Pellet Die O-Ring Kit 20mm dia.
- 03168 Evacuable Pellet Die Plunger 20mm dia.
- 03169 Evacuable Pellet Die Body 20mm dia.
- 03191 Evacuable Pellet Die Base 20mm dia.
- 03193 Evacuable Pellet Die Sample Retaining Rings (pkt of 10) 20mm dia.
- 03230 Evacuable Pellet Die Base 25mm and 32mm dia.
- 03290 Evacuable Pellet Die Complete 40mm dia.
- 03291 Evacuable Pellet Die Pellets (pair) 40mm dia.
- 03292 Evacuable Pellet Die O-Ring Kit 40mm dia.
- 03293 Evacuable Pellet Die Plunger 40mm dia.
- 03294 Evacuable Pellet Die Body 40mm dia.
- 03295 Evacuable Pellet Die Base 40mm dia.
- 03297 Evacuable Pellet Die Perspex Extractor Ring 40mm dia.
- 03298 Evacuable Pellet Die Sample Retaining Rings (pkt of 10) 40mm dia.
- 03300 Evacuable Pellet Die Complete 32mm dia.
- 03310 Evacuable Pellet Die Pellets (pair) 32mm dia.
- 03320 Evacuable Pellet Die O-Ring Kit 32mm dia.
- 03330 Evacuable Pellet Die Plunger 32mm dia.
- 03340 Evacuable Pellet Die Body 32mm dia.
- 03400 Evacuable Pellet Die pellet holder 5mm dia. with rectangular mounting plate
- 03404 Evacuable Pellet Die pellet holder 10mm dia. with rectangular mounting plate
- 03410 Evacuable Pellet Die pellet holder 13mm dia. with rectangular mounting plate
- 03460 Evacuable Pellet Die paper rings (pkt of 100) 13mm dia. (11mm dia. aperture)
- 03470 Evacuable Pellet Die micro frame (pkt of 100) 13mm dia. (11mm x 2mm aperture)
- 03475 Evacuable Pellet Die ultra micro frame (pkt of 100) 13mm dia. (4mm x 1mm aperture)
- 03520 Evacuable Pellet Die Sample Retaining Rings (pkt of 10) 32mm dia.
- 03521 Evacuable Pellet Die Aluminium Extractor Ring for 20, 25, 32 and 35mm dia

SpecacDie™



SpecacDie™

03700

The SpecacDie™ is an easy to use halide pellet maker ideal for the laboratory with small numbers of samples to analyze.

SpecaMill™

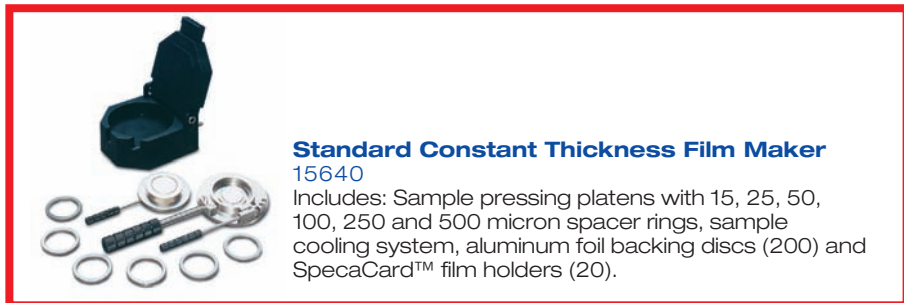


SpecaMill™

06000

A sample grinder that provides efficient grinding and blending of solid materials for preparation of KBr sample pellets.

Film Makers



Standard Constant Thickness Film Maker

15640

Includes: Sample pressing platens with 15, 25, 50, 100, 250 and 500 micron spacer rings, sample cooling system, aluminum foil backing discs (200) and Specacard™ film holders (20).



High Temperature Constant Thickness Film Maker

15800

Includes: Fully integrated film maker with 15, 25, 50, 100, 250 and 500 micron spacer rings, heating and cooling system with digital temperature controller, aluminum foil backing discs (200) and Specacard™ film holders (20).

Specadie™

- 03550 Specadie™ body with bolts and seals
- 03570 Specadie™ set of bolts (top and bottom)
- 03580 Specadie™ set of seals (top and bottom)
- 03590 Specadie™ two open ended spanners (9/16" and 1/2" AF) (2 sets)
- 03595 Specadie™ bench mounted spanner
- 03700 Specadie™ Kit Complete

Specamill™

- 06000 Specamill™ (220v, 50Hz UK)
- 06001 Specamill™ (220v, 50Hz EU)
- 06100 Specamill™ stainless steel capsule set (3 grinding spheres included)
- 06200 Specamill™ agate capsule set (3 grinding spheres included)
- 06300 Specamill™ agate spheres (pkt of 3) for agate capsule
- 06400 Specamill™ stainless steel spheres (pkt of 3) for stainless steel capsule
- 06500 Specamill™ replacement blade
- 06600 Specamill™ replacement clip
- 06700 Specamill™ spare capsule holder
- 06800 Specamill™ (110v, 60Hz US)

Film Makers

- 15640 Constant Thickness Film Maker Accessory
- 15621 Constant Thickness Film Maker Accessory replacement cooling block chamber
- 15622 Constant Thickness Film Maker Accessory replacement top and bottom film making assemblies (no spacing rings)
- 15627 Constant Thickness Film Maker Accessory 40mm diameter aluminium foil discs (pkt of 200)
- 15629 Constant Thickness Film Maker Accessory replacement spacing rings (set of 6 -sizes A to F)
- 15631 Constant Thickness Film Maker Kit I. (Includes P/N's 15640 and 15515) (specify voltage/country)
- 15633 Constant Thickness Film Maker Kit II. (Includes P/N's 15640, 15515 and 15011) (specify voltage/country)
- 15800 High Temperature Film Maker Accessory and temperature controller (specify country)
- 15805 High Temperature Film Maker Accessory replacement spacing rings (set of 6 -sizes A to F)
- 15810 High Temperature Film Maker Kit I. (Includes P/N's 15800 and 15011) (specify country)
- 03805 PTFE retaining rings for supporting elastic film samples (pkt of 20)

Heated Platens



Heated Platens

15515

Provides controlled and safe means of hot pressing samples. Included temperature controller, specify 110v 60Hz or 220 v 50Hz.

SpecaCards™



SpecacCard™ Sample Holders

03800

For mounting thin polymer films and KBr pellets for analysis and storage. Slide mounted, self sealing adhesive coating with clear aperture: 10 mm diameter or 25x10 mm

Heated Platens

- 15512 Atlas Heated Platens replacement heater set for 220v, 50Hz platens
- 15515 Atlas Heated Platens and temperature controller system
- 15522 Atlas Heated Platens replacement heater set for 110v, 60Hz platens
- 15601 Atlas Heated Platens PTFE sheets 0.25mm thick (pkt of 10)

Specacards™

- 03800 Specacards™ (pkt of 100) 10mm dia. aperture
- 03810 Specacards™ (pkt of 100) 10mm x 25mm aperture
- 03815 Specacards™ Filing Rack

Notes

Kits



SpecaCabinet™



SpecaCabinet™

19100 19101 19102

For storage of hygroscopic infrared materials under controlled temperature.

Sampling Kits



FT-IR Starter Kit

FT-IR

The ideal FT-IR Starter Kit for any laboratory

Polishing Kits



Polishing Kit Complete

04000

The window polishing kit contains all the essential materials required to clean and repolish infrared transmission windows. Repolishing can be achieved efficiently and economically with minimum skill.

Oil in Water Kits



Oil In Water Kit Complete

08900

SpecaCabinet™

- 19100 Specacabinet™ (220v, UK)
- 19101 Specacabinet™ (110v, 60Hz)
- 19102 Specacabinet™ (220v, EU)

Sampling Kits

- 01135 FT-IR Starter Kit
- 04540 Professional Sampling Kit. Consists of 11165 (Gateway), 4510 (MiniDiffPlus) and 19820 (Fixed Angle Specular Reflectance Accessory) Specify spectrometer for baseplate.

Vacuum Pump Kits

- 03640 Vacuum Pump Complete Kit (specify voltage/country)
- 03641 Vacuum Pump Seal Kit
- 03642 Vacuum Pump Mist Filters
- 03643 Vacuum Pump Oil (1 litre)

Polishing Kits

- 04000 Polishing Kit Complete
- 04010 Polishing Kit polishing selvyt (pkt of 5)
- 04040 Polishing Kit polyethylene bottles (pkt of 2)
- 04050 Polishing Kit cleaning sponges (pkt of 2)
- 04060 Polishing Kit bottle of rouge (approx. 75g net)
- 04080 Polishing Kit plain selvyt strips (pkt of 2)
- 04090 Polishing Kit lap paper (pkt of 5)
- 04095 Polishing Kit brushes (pkt of 2)

Oil in Water Kits

- 08900 Oil in Water Analysis Kit Complete
- 08901 Oil in Water Analysis Kit 10mm pathlength rectangular infrared quartz cells (matched pair)
- 08902 Oil in Water Analysis Kit 50mm pathlength cylindrical infrared quartz cells (matched pair)
- 08903 Oil in Water Analysis Kit 100mm pathlength cylindrical infrared quartz cells (matched pair)
- 08904 Oil in Water Analysis Kit cell holder (3" x 2" mount)

Notes

IR Polarizers and Wire Grids



Wire Grids

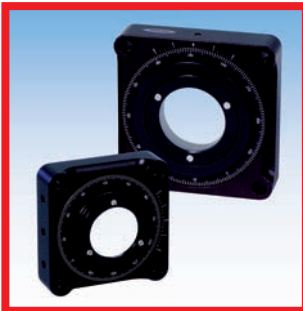


Free Standing Wire Grids

57200 -57135

Extremely efficient polarizers can be made, for the mid-IR to millimeter wavelengths using free standing wire grids (unsupported wires). The only requirement is that the wavelength is much greater than the wire spacing.

Rotators



Rotators

57340 57350 57360 57370

These precision rotators are designed for mounting substrate polarizers. They feature dual thrust roller bearing construction for stiffness and positive feel. Graduated in 2 degree intervals these rotators can either be post or bench mounted.

Wire Grids

- 57200 Free standing wire grid- 50mmOD, 25mmID, 10mm thk, 5u wire diam, 12.5u period
- 57201 Free standing wire grid- 50mmOD, 25mmID, 10mm thk, 5u wire diam, 25u period
- 57202 Free standing wire grid- 80mmOD, 50mmID, 12mm thk, 5u wire diam, 12.5u period
- 57203 Free standing wire grid- 80mmOD, 50mmID, 12mm thk, 10u wire diam, 25.0u period
- 57204 Free standing wire grid- 105mmOD, 75mmID, 12mm thk, 5u wire diam, 12.5u period
- 57205 Free standing wire grid- 105mmOD, 75mmID, 12mm thk, 10u wire diam, 25.0u period
- 57206 Free standing wire grid- 130mmOD, 100mmID, 12mm thk, 5u wire diam, 12.50u period
- 57207 Free standing wire grid- 130mmOD, 100mmID, 12mm thk, 10u wire diam, 25.0u period
- 57100 Free standing wire grid- 140mmOD, 120mmID, 12.7mm thk, 10u wire diam, 25.0u period
- 57110 Free standing wire grid- 140mmOD, 120mmID, 12.7mm thk, 10u wire diam, 50.0u period
- 57130 Free standing wire grid- 133mmOD, 95mmID, 12.7mm thk, 10u wire diam, 25.0u period
- 57135 Free standing wire grid- 133mmOD, 95mmID, 12.7mm thk, 5u wire diam, 12.5u period

Rotators

- 57340 Rotator Mount for 25mm clear aperture polarizers
- 57350 Rotator Mount for 38mm clear aperture polarizers
- 57360 Rotator Mount for 50mm clear aperture polarizers
- 57370 Rotator Mount for 71mm clear aperture polarizers

Polarizers



Holographic Polarizers

12000 - 12951

Holographic polarizers are much more efficient than ruled gratings because of the much shorter periods and extreme uniformity across the surface of the substrate – light scatter associated with gratings is eliminated.



Holographic Polarizer in an Optical Mount

57010 - 57097

Holographic polarizers are much more efficient than ruled gratings because of the much shorter periods and extreme uniformity across the surface of the substrate – light scatter associated with gratings is eliminated.



Economy Polarizers

57010 - 57097

these polarizers are offered from stock on BaF₂, CaF₂, KRS-5, and ZnSe substrates, in standard 25 or 50 mm support rings. They are manufactured at 2500 lines/mm, to provide acceptable polarization performance at an economical price.

GS57500	KRS-5, 25mmOD, Parallelism (arc mins) 5, Flatness (finges per inch @ 633 nm) 4
GS57501	CaF ₂ , 25mmOD, Parallelism (arc mins) 3, Flatness (finges per inch @ 633 nm) 2
GS57502	BaF ₂ , 25mmOD, Parallelism (arc mins) 3, Flatness (finges per inch @ 633 nm) 2
GS57503	ZnSe, 25mmOD, Parallelism (arc mins) 3, Flatness (finges per inch @ 633 nm) 2
GS57504	KRS-5, 50mmOD, Parallelism (arc mins) 5, Flatness (finges per inch @ 633 nm) 4
GS57505	CaF ₂ , 50mmOD, Parallelism (arc mins) 3, Flatness (finges per inch @ 633 nm) 2
GS57506	BaF ₂ , 50mmOD, Parallelism (arc mins) 3, Flatness (finges per inch @ 633 nm) 2
GS57507	ZnSe, 50mmOD, Parallelism (arc mins) 3, Flatness (finges per inch @ 633 nm) 2

Polarizers

- 12000 Accessory Holographic Polarizer - KRS5, 34.9mmOD, 25mmID, 7.9mm thk, 0.25u period
- 12001 Accessory Holographic Polarizer - HER KRS5, 34.9mmOD, 25mmID, 7.9mm thk, 0.25u period
- 12200 Accessory Holographic Polarizer - Polyethylene, 34.9mmOD, 25mmID, 7.9mm thk, 4.00u period
- 12500 Polarizer Rotating Ring with slide mount (3" x 2")
- 12501 Polarizer Kit. Includes a Polarizer and Rotating Ring mount P/N 12500
(additional price to polarizes, does not include polarizes)
- 12700 Accessory Holographic Polarizer - Ge, 34.9mmOD, 25mmID, 7.9mm thk, 0.40u period
- 12701 Accessory Holographic Polarizer - HER Ge, 34.9mmOD, 25mmID, 7.9mm thk, 0.40u period
- 12800 Accessory Holographic Polarizer - CaF2, 34.9mmOD, 25mmID, 7.9mm thk, 0.25u period
- 12801 Accessory Holographic Polarizer - HER CaF2, 34.9mmOD, 25mmID, 7.9mm thk, 0.25u period
- 12900 Accessory Holographic Polarizer - BaF2, 34.9mmOD, 25mmID, 7.9mm thk, 0.25u period
- 12901 Accessory Holographic Polarizer - HER BaF2, 34.9mmOD, 25mmID, 7.9mm thk, 0.25u period
- 12950 Accessory Holographic Polarizer - ZnSe, 34.9mmOD, 25mmID, 7.9mm thk, 0.25u period
- 12951 Accessory Holographic Polarizer - HER ZnSe, 34.9mmOD, 25mmID, 7.9mm thk, 0.25u period
- 57001 Unmounted KRS-5 polarizer-25mmOD, .25u period
- 57003 Unmounted Ge polarizer, 25mmOD, 0.4u period
- 57006 Unmounted CaF2 polarizer, 25mmOD, 0.25u period
- 57008 Unmounted BaF2 polarizer, 25mmOD, 0.25u period
- 57016 Unmounted ZnSe polarizer, 25mmOD, 0.25u period
- 57002 HER unmounted KRS-5 polarizer, 25mmOD, 0.25u period
- 57004 HER unmounted Ge polarizer, 25mmOD, 0.4u period
- 57007 HER unmounted CaF2 polarizer, 25mmOD, 0.25u period
- 57009 HER unmounted BaF2 polarizer, 25mmOD, 0.25u period
- 57017 HER unmounted ZnSe polarizer, 25mmOD, 0.25u period
- 57010 Polarizer - Optical Mount - KRS5 Substrate, 41mm OD, 25mm ID, 6.7mm thk.,
wire period=0.25um
- 57020 Polarizer - Optical Mount - Polyethylene Substrate, 41mm OD, 25mm ID,
6.7mm thk., wire period=4.0um
- 57050 Polarizer - Optical Mount - ZnSe Substrate, 41mm OD, 25mm ID, 6.7mm thk., wireperiod=0.25um
- 57070 Polarizer - Optical Mount - Ge Substrate, 41mm OD, 25mm ID, 6.7mm thk., wire period=0.4um
- 57080 Polarizer - Optical Mount - CaF2 Substrate, 41mm OD, 25mm ID, 6.7mm thk.,
wire period=0.25um
- 57090 Polarizer - Optical Mount - BaF2 Substrate, 41mm OD, 25mm ID, 6.7mm thk.,
wire period=0.25um
- 57011 Polarizer - Optical Mount - HER KRS5 Substrate, 41mm OD, 25mm ID,
6.7mm thk., wire period=0.25um
- 57051 Polarizer - Optical Mount -HER ZnSe Substrate, 41mm OD, 25mm ID, 6.7mm thk.,
wire period=0.25um
- 57071 Polarizer - Optical Mount -HER Ge Substrate, 41mm OD, 25mm ID, 6.7mm thk.,
wire period=0.4um
- 57081 Polarizer - Optical Mount - HER CaF2 Substrate, 41mm OD, 25mm ID, 6.7mm thk.,
wire period=0.25um
- 57091 Polarizer - Optical Mount - HER BaF2 Substrate, 41mm OD, 25mm ID, 6.7mm thk.,
wire period=0.25um

Polarizers - *continued*

- 57012 Polarizer - Optical Mount - KRS5 Substrate, 55mm OD, 38mm ID, 8.7mm thk., wire period=0.25um
- 57052 Polarizer - Optical Mount - ZnSe Substrate, 55mm OD, 38mm ID, 8.7mm thk., wire period=0.25um
- 57072 Polarizer - Optical Mount - Ge Substrate, 55mm OD, 38mm ID, 8.7mm thk., wire period=0.40um
- 57082 Polarizer - Optical Mount - CaF2 Substrate, 55mm OD, 38mm ID, 8.7mm thk., wire period=0.25um
- 57092 Polarizer - Optical Mount - BaF2 Substrate, 55mm OD, 38mm ID, 8.7mm thk., wire period=0.25um
- 57013 Polarizer - Optical Mount - HER KRS5 Substrate, 55mm OD, 38mm ID, 8.7mm thk., wire period=0.25um
- 57053 Polarizer - Optical Mount - HER ZnSe Substrate, 55mm OD, 38mm ID, 8.7mm thk., wire period=0.25um
- 57073 Polarizer - Optical Mount -HER Ge Substrate, 55mm OD, 38mm ID, 8.7mm thk., wire period=0.40um
- 57083 Polarizer - Optical Mount - HER CaF2 Substrate, 55mm OD, 38mm ID, 8.7mm thk., wire period=0.25um
- 57093 Polarizer - Optical Mount - HER BaF2 Substrate, 55mm OD, 38mm ID, 8.7mm thk., wire period=0.25um
- 57014 Polarizer - Optical Mount - KRS5 Substrate, 70mm OD, 50mm ID, 8.7mm thk., wire period=0.25um
- 57054 Polarizer - Optical Mount - ZnSe Substrate, 70mm OD, 50mm ID, 8.7mm thk., wire period=0.25um
- 57074 Polarizer - Optical Mount - Ge Substrate, 70mm OD, 50mm ID, 8.7mm thk., wire period=0.4um
- 57084 Polarizer - Optical Mount - CaF2 Substrate, 70mm OD, 50mm ID, 8.7mm thk., wire period=0.25um
- 57094 Polarizer - Optical Mount - BaF2 Substrate, 70mm OD, 50mm ID, 8.7mm thk., wire period=0.25um
- 57015 Polarizer - Optical Mount -HER KRS5 Substrate, 70mm OD, 50mm ID, 8.7mm thk., wire period=0.25um
- 57055 Polarizer - Optical Mount -HER ZnSe Substrate, 70mm OD, 50mm ID, 8.7mm thk., wire period=0.25um
- 57075 Polarizer - Optical Mount -HER Ge Substrate, 70mm OD, 50mm ID, 8.7mm thk., wire period=0.40um
- 57085 Polarizer - Optical Mount -HER CaF2 Substrate, 70mm OD, 50mm ID, 8.7mm thk., wire period=0.25um
- 57095 Polarizer - Optical Mount -HER BaF2 Substrate, 70mm OD, 50mm ID, 8.7mm thk., wire period=0.25um
- 57056 Polarizer - Optical Mount - ZnSe Substrate, 90mm OD, 71mm ID, 8.7mm thk., wire period=0.25um
- 57076 Polarizer - Optical Mount - Ge Substrate, 90mm OD, 71mm ID, 8.7mm thk., wire period=0.40um
- 57086 Polarizer - Optical Mount - CaF2 Substrate, 90mm OD, 71mm ID, 8.7mm thk., wire period=0.25um
- 57096 Polarizer - Optical Mount - BaF2 Substrate, 90mm OD, 71mm ID, 8.7mm thk., wire period=0.25um
- 57057 Polarizer - Optical Mount - HER ZnSe Substrate, 90mm OD, 71mm ID, 8.7mm thk., wire period=0.25um
- 57077 Polarizer - Optical Mount - HER Ge Substrate, 90mm OD, 71mm ID, 8.7mm thk., wire period=0.40um
- 57087 Polarizer - Optical Mount - HER CaF2 Substrate, 90mm OD, 71mm ID, 8.7mm thk., wire period=0.25um
- 57097 Polarizer - Optical Mount - HER BaF2 Substrate, 90mm OD, 71mm ID, 8.7mm thk., wire period=0.25um

Specac delivers quality products engineered to meet your needs.

Our accessories and systems are easy-to-use and built to last. From thin plastic film preparation accessories, used for routine quality checks, to sophisticated remote sampling systems for reaction monitoring - you can be sure Specac has the experience to provide the ideal sampling solution.

Even if your application is not standard, you can draw upon the resources of our optical and mechanical engineering experts, as well as our specialist team of spectroscopists.

Together we can satisfy your sampling requirements. Don't hesitate to contact us today.



Specac Limited,

River House, 97 Cray Ave, St. Mary Cray, Orpington, Kent BR5 4HE U.K.
T : +44 (0)1689 873134 F : +44 (0)1689 878527 E : sales@specac.co.uk
Registered No. 1008689 England

Specac Inc.,

50 Sharpe Drive, Cranston, RI 02920 U.S.A.
T : Toll Free +1 800 447 2558 E : sales@specac.com

www.specac.com

www.specac.com

Specac is part of John Crane



John Crane is the acknowledged leader and worlds largest designer, manufacturer, and supplier of engineered seating systems, solutions and associated products.

John Crane is a subsidiary of Smiths Group PLC **smiths**

bringing technology to life

Smiths is a world leader in the practical application of advanced technologies, Smiths Group delivers products and services threat & contraband detection, medical devices, energy and communications markets worldwide.